

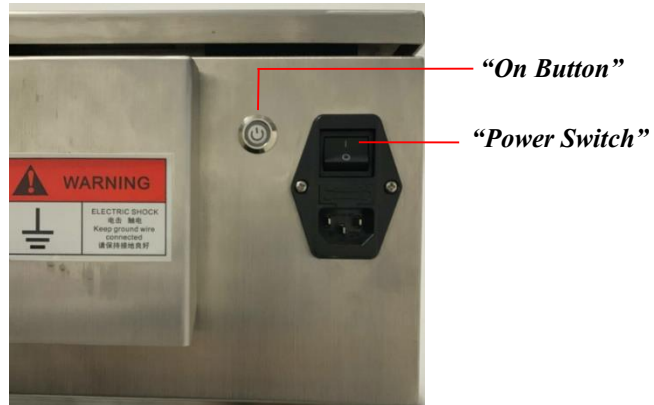


Start Up Training Packet

2023 Edition



Turn On and Off





DO NOT POWER OFF BY USING THE BUTTON OR SWITCH!

Turn On

1. Plug in the power supply chord.
2. Switch on the **"Power Switch"** and then hold the **"On Button"** (**Blue when power switch is on**) for 3 seconds

Turn Off

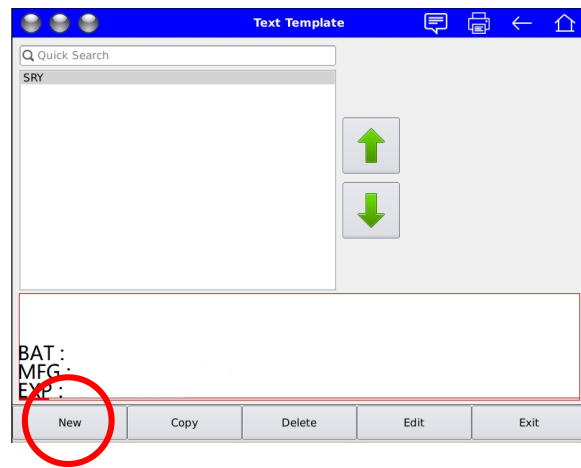
1. Press **"Home"**  key to return to default page.
2. Press **"Shut Down"**  key to turn off the printer.
3. Shut Down process will last for 300 seconds (5 minutes). Please wait until it completes, and the screen will go dark.

Create A Message

1. Select **"Text"**.

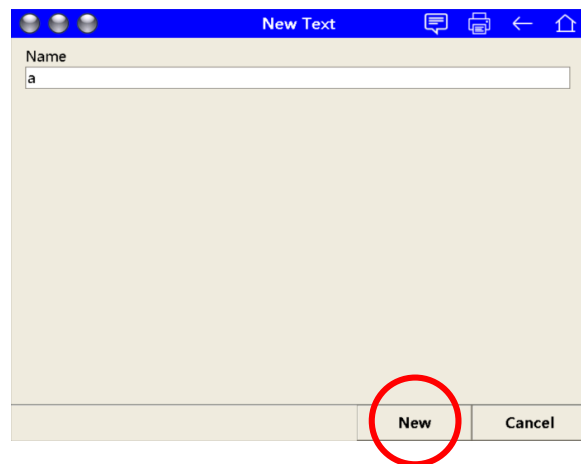


2. Select **"New"**.



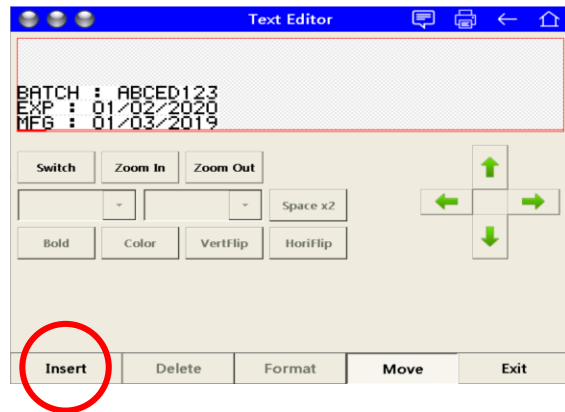
3. Under **"Name"**, type in the name you would like to call this template.

4. Press **"New"** to confirm and access the next page.



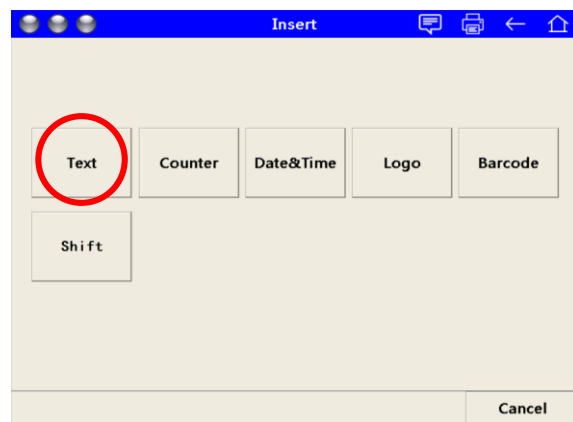
5. Tap on **“Insert”**.

- **Format** will edit existing text.
- **Move** will move text.
- Tap on a message if you want to edit that specific code. **A blue rectangle** will appear around the message you selected.



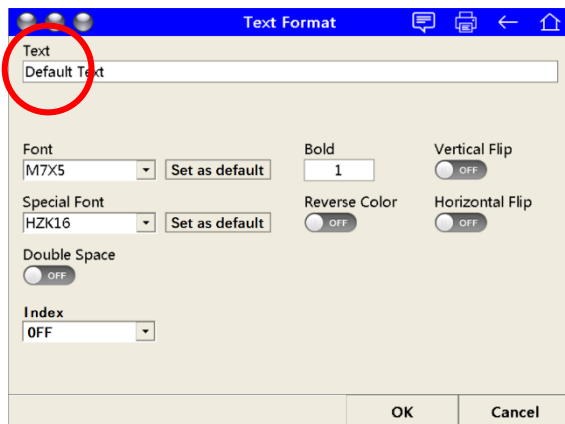
6. Tap on **“Text”**.

- **Counter:** Inserts an Auto Counter to the editor
- **Date & Time:** Inserts an auto Date and Time to the editor
- **Logo:** Inserts a Graphic Logo to the editor Barcode: Inserts a Barcode to the editor Shift: Inserts a Shift to the editor
- **Cancel:** Press to quit and return to previous page

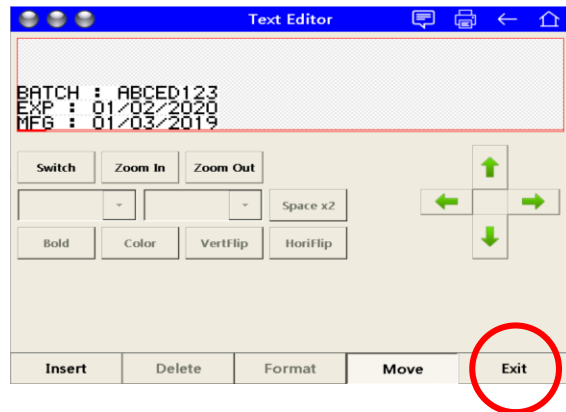


7. Under **“Text”**, type in the code you would like to print. Then press **“OK”**.

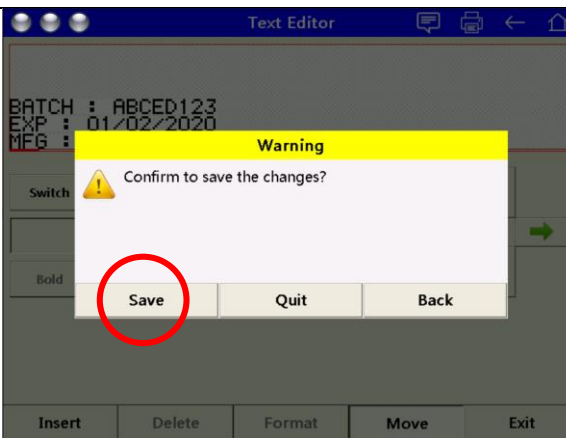
- **Font:** The size of the message.



8. The message you just created will appear on screen. **If you are finished creating your message Tap on “Exit”. If you are not finished repeat Steps 5 – 7 to add more lines of text.**



9. Tap on “Save”.

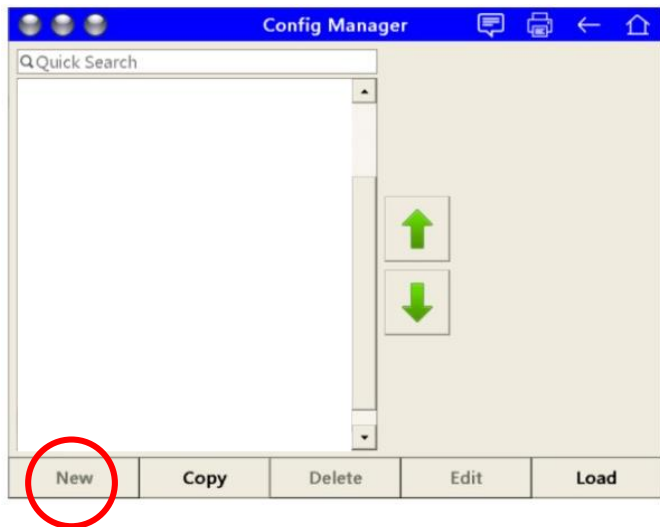


Adjusting Print Speed, Delay, etc.

1. Tap on **"Config"**.

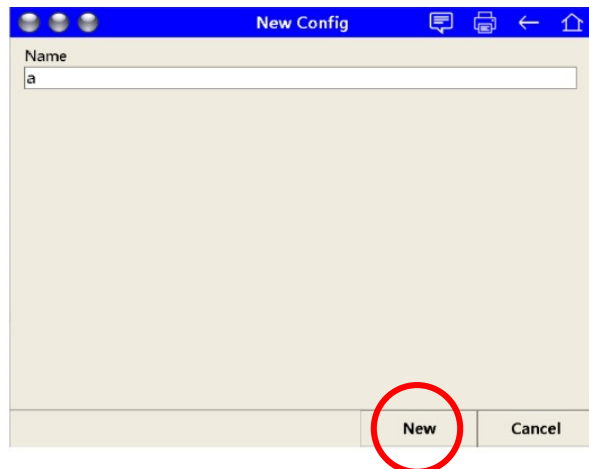


2. Tap on **"New"**.

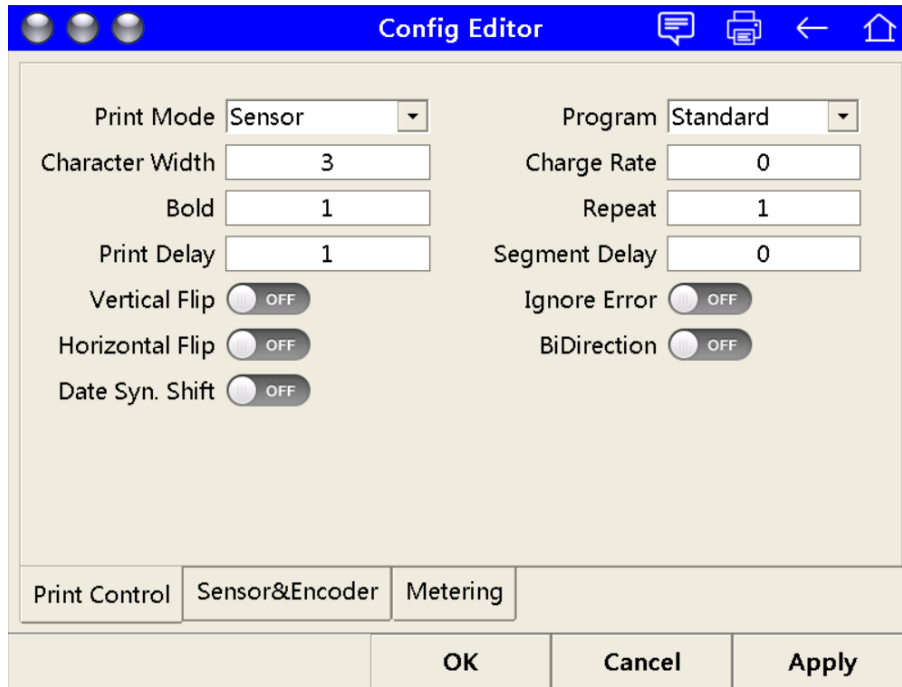


3. Under **"Name"**, type in the name you would like to call this template.

4. Tap on **"New"** to confirm and access the next page.



5. **Adjust settings** to work for your production line. Then tap **“OK”**.



IMPORTANT NOTE:

If you increase the **“Bold”** number, you must also lower the **“Character Width”** number to retain the same size text. Otherwise, increasing **“Bold”** will cause the text to enlarge when printing.

“Configuration” Page	
“Print Mode”	Always keep on “Sensor” .
“Character Width”	Printing Speed. The lower the number, the faster the machine will print making the text smaller in size. The higher the number, the slower it will print making the text larger in size.
“Bold”	Edit the value to bold the printing text. Do not exceed 2.
“Print Delay”	* 10000 = 1 sec of print delay.
“Vertical Flip”	Press to reverse the print vertically.
“Horizontal Flip”	Press to reverse the print horizontally.

Clean the Printhead

Step 1: Turn the Ink Jet Stream Off.

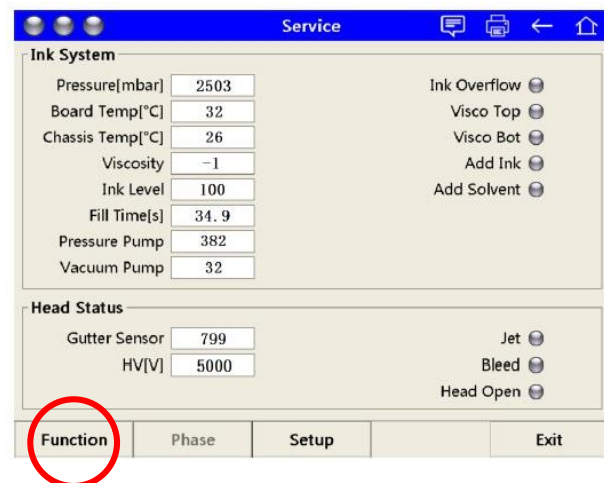
Option 1: Turn Machine Off.

Option 2

1. Tap on **"Service"**.



2. Tap on **"Function"**.



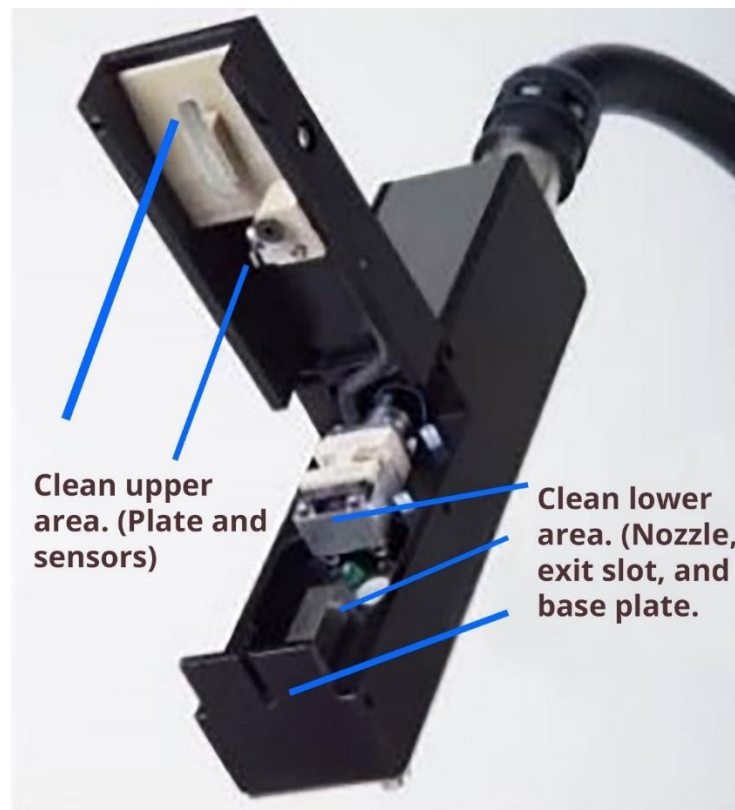
3. For the **“Jet”, Tap Off.**

- When the Jet is On, the grey circle will be green.



Step 2

Open the print head as seen below. Position the head over a chemical bin or bucket.



Step 3

Use the needle nose of the Make-up squirt bottle to spray and scrap off any ink located on the areas shown in the photo above.

Step 4

Drain residue into chemical bin or bucket. Try not to get the liquid residue into the gutter vacuum as it will suck up any liquid that is near it.

Step 5

Use hand blower or lint-free rag to dry remaining wet areas.

Step 6

Close Printhead cover.

Step 7

Turn **“Jet” On**. See Step 1.

Step 8

Return to **“Home”** page. It is the page that says **“PROSPR”**.

Step 9

Tap on **“Print”**.

Step 10

Wait until under **“Status”** it reads **“Ready”**, then tap on the **“Start”** button and begin printing.